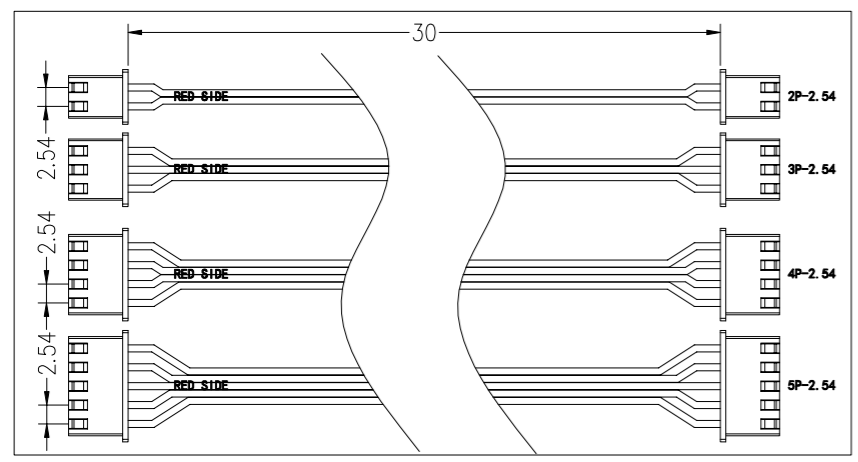


POWER_PORT CONNECTOR		
No.	Name	Description
1	DC+12V~24V	Power Supply (8~24V).
2	GND	Ground.

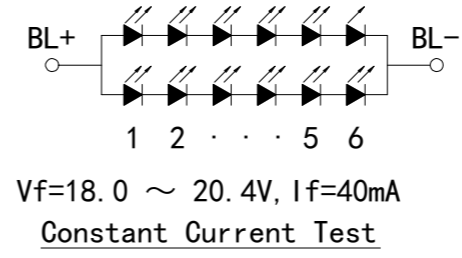
UART1 CONNECTOR		
No.	Name	Description
1	GND	Ground.
2	TX	Transmit Data (TTL/CMOS Level).
3	RX	Receive Data (TTL/CMOS Level).


SWD (Serial Wire Debug) CONNECTOR		
No.	Name	Description
1	SWDIO/JTMS	Bidirectional Data Transfer.
2	SWCLK/JTCK	Clock From Host To Target.
3	NRST	Reset.
4	GND	Ground.

RS485 CONNECTOR		
No.	Name	Description
1	NC	No Connect.
2	A	Non-inverting Receiver Input And Non-inverting Driver Output.
3	B	Inverting Receiver Input And Inverting Driver Output.
4	GND	Ground.
5	NC	No Connect.



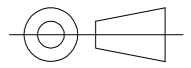
*1. LCD Display Type	TFT/Transmissive/Normally Black/16.7M COLOR/IPS		
*2. Viewing Direction	Free View	*6. Storage Temp	-30° ~ 80° C, ≤90%RH
*3. Interface	RS485、UART (TTL)、USB (to UART)	*7. Driver IC	STM32F7X、GT911 (GTP)
*4. Power Supply	12V-24V	*8. Backlight	WHITE Vf=20V If=40mA (Typ)
*5. Operating Temp	-20° ~ 70° C, ≤90%RH	*9. LCM Brightness	450 cd/m ² (Typ)





HTHMI

Dwg Title: **HTM050A1-USART-ST V1.0**

Scale: 1:1	Unit: mm	Tol.: ±0.3	
Ver: B/1	Drawn: YE	Date: 2024-04-16	